

210 Brantingham Road, Chorlton, Manchester, M21 0TX





3 1 2 D

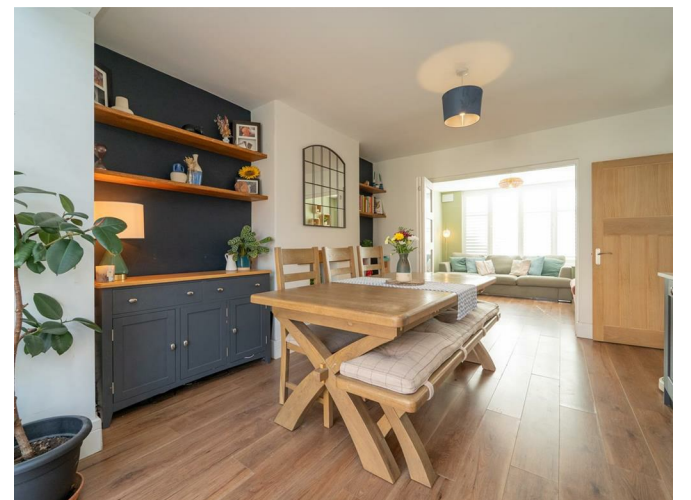
****VIDEO TOUR AVAILABLE**** A beautifully presented and bright **THREE BEDROOM** traditional bay-fronted semi-detached home, ideally located on a highly sought-after residential road in the heart of Chorlton. Chorlton Village offers a lively and vibrant atmosphere, with an excellent selection of cafés, bars, and restaurants.

A wide range of local shops cater for everyday needs, including the popular award-winning Barbakan delicatessen and the Unicorn, Manchester's co-operative grocery store. The Metrolink station on Wilbraham Road is also conveniently located within a ten-minute walk, offering direct access to Manchester City centre, Manchester Airport and MediaCity.

The thoughtfully arranged accommodation includes a porch leading into a welcoming entrance hall, a front-facing lounge with a bay window, and a dining room to the rear that opens into a modern fitted kitchen/breakfast room. The ground floor also provides a W.C and access to an enclosed rear garden with a lawn.

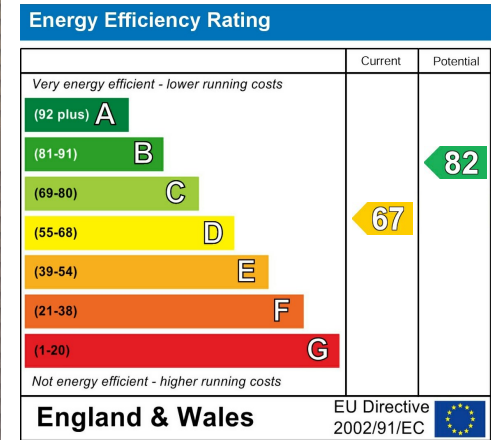
To the first floor, a landing provides access to three bedrooms and a three-piece family bathroom. Additional features include gas-fired central heating, an enclosed rear lawned garden with a paved patio area, along with a detached garage and a driveway offering ample off-road parking for multiple vehicles. Early viewing is highly recommended to fully appreciate this superb home.

£470,000



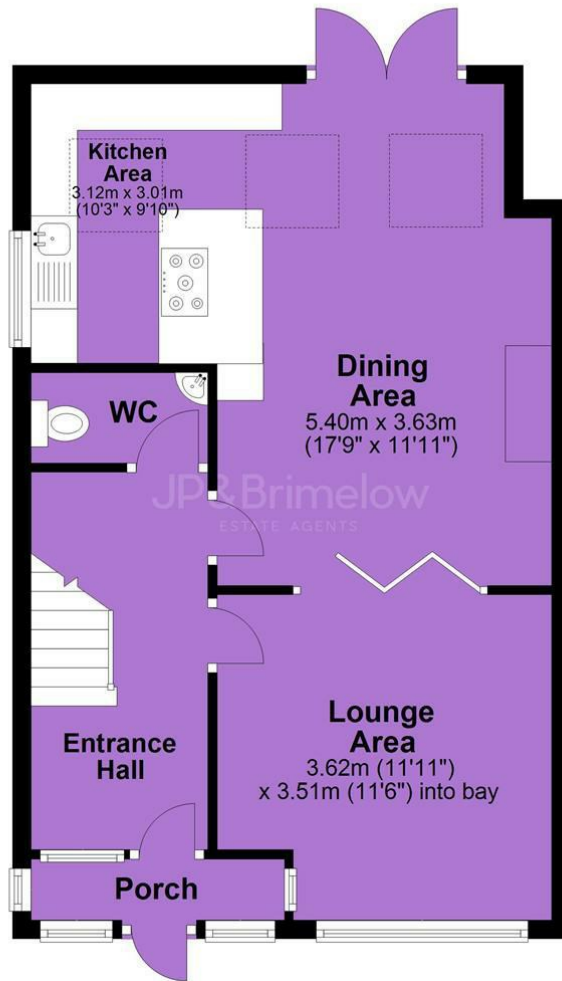


EPC Chart

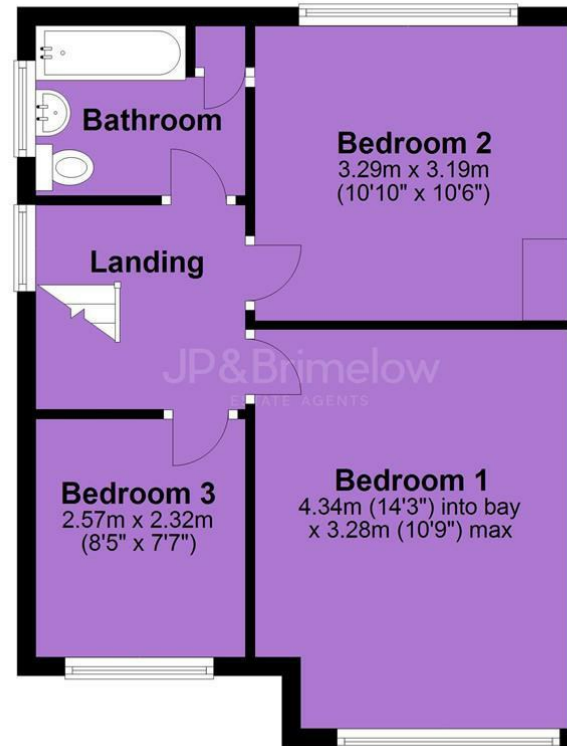


Tenure: Freehold Council Tax Band: C

Ground Floor



First Floor



JP & Brimelow Estate Agents Ltd
430 Barlow Moor Road, Manchester, M21 8AD
Tel: 0161 8822233
E: sales@jpbrimelow.co.uk www.jpandbrimelow.co.uk



JP & Brimelow
ESTATE AGENTS

NOTICE: JP & Brimelow Estate Agents Ltd for themselves and for the vendors or lessors of this property whose agents they are give notice that:

- (i) the particulars are set out as a general outline only for the guidance of intending purchasers or lessees, and do not constitute, nor constitute part of, an offer or contract;
- (ii) all descriptions, dimensions, references to the condition and necessary permissions for use and occupation, and other details are given in good faith and are believed to be correct but any intending purchasers or tenants should not rely on them as statements or representations of fact but must satisfy themselves by inspection or otherwise as to the correctness of each of them;
- (iii) no person in the employment of JP & Brimelow Estate Agents Ltd has any authority to make or give any representation or warranty whatever in relation to this property.

jpandbrimelowstateagents

@jpandbrimelow

